

IA AS INCLUSIVE DESIGN

Sarah Barrett @documentalope

<http://bit.ly/inclusiveIA>

Accessibility is important.

**Accessibility can feel fraught,
and that's okay.**

**>700 lawsuits in the US in 2017 over
inaccessible websites.**

[ADA Title III 2017 Report](#)

15% of people have a disability.

[WHO World report on accessibility](#)

Only 0.02% of our visitors use IE6 - 8.

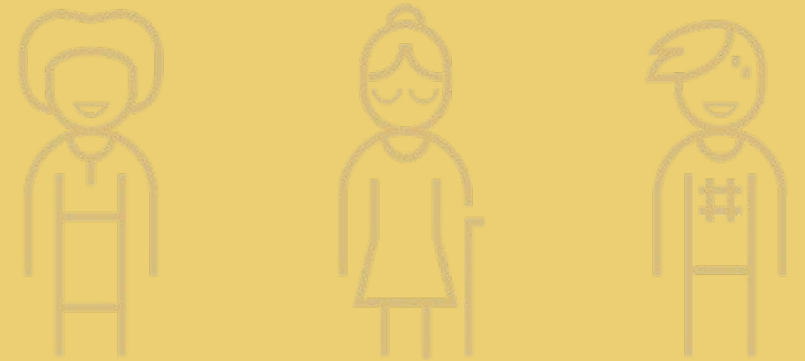
**Supporting legacy browsers increases
development time by at least 30%.**

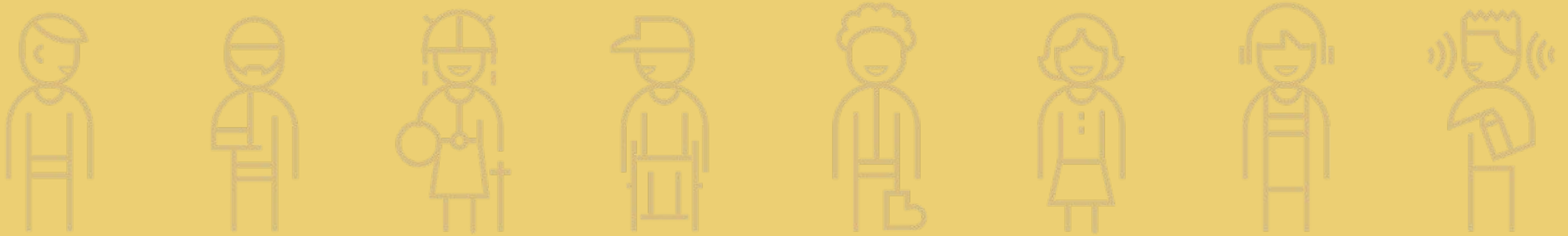
We do it all the time.

But The Client Wants IE 6 Support!

It's the right thing to do.

[Anne Gibson's "An Alphabet of Accessibility" \(PDF\)](#)





**Inclusive design is the method.
Accessibility is an outcome.**

[Microsoft Inclusive Design resources](#)



Accessibility is important.

Accessibility is important
~~for other people.~~

The background of the slide is a solid light pink color. It features a repeating pattern of small, stylized icons. Each icon consists of a light pink envelope with a white card inside. The card has a simple line drawing of a sad face, with two dots for eyes and a downward-curving line for a mouth. These icons are scattered across the slide, appearing in the top, bottom, and side margins.

**Bad news:
IA is an accessibility problem.**

Broad, shallow navigation performs better in general.

[Hochheiser - Revisiting breadth vs. depth in menu structures for blind users of screen readers](#)

Blind users need 8x longer to accomplish a task when navigation is deep.

Nogueira et al - Comparing sighted and blind users task performance in responsive and non-responsive web design

**Half the problems encountered by
dyslexic users are IA problems.**

Freire - Empirical results from an evaluation of the accessibility of websites by dyslexic users

Common IA issues are barriers to access.

[Ramakrishnan – “Non-visual web browsing: Beyond web accessibility”](#)

[Bigham – “The effects of ‘not knowing what you don’t know’ on web accessibility for blind web users \(PDF\)”](#)

[Lazar – What frustrates screen reader users on the web: A study of 100 blind users \(PDF\)](#)

The background of the slide is a solid light teal color. It features a repeating pattern of small, stylized envelopes. Each envelope is outlined in a slightly darker teal and has a simple, curved line for a smile on its front flap. The envelopes are arranged in a grid-like fashion, with some partially visible at the edges of the frame.

**Good news:
Accessibility is an IA problem.**

W3C Recommendation

TABLE OF CONTENTS

Abstract

Status of This Document

Introduction

0.1 Background on WCAG 2

0.2 WCAG 2 Layers of Guidance

0.3 WCAG 2.1 Supporting Documents

0.4 Requirements for WCAG 2.1

0.5 Comparison with WCAG 2.0

0.5.1 New Features in WCAG 2.1

0.5.2 Numbering in WCAG 2.1

0.5.3 Conformance to WCAG 2.1

0.6 Later Versions of Accessibility Guidelines

1. Perceivable

1.1 Text Alternatives

1.1.1 Non-text Content

1.2 Time-based Media

1.2.1 Audio-only and Video-only (Prerecorded)

1.2.2 Captions (Prerecorded)

1.2.3 Audio Description or Media Alternative (Prerecorded)

1.2.4 Captions (Live)

1.2.5 Audio Description (Prerecorded)

1.2.6 Sign Language (Prerecorded)

1.2.7 Extended Audio Description (Prerecorded)

1.2.8 Media Alternative (Prerecorded)

1.2.9 Audio-only (Live)

1.3 Adaptable

1.3.1 Info and Relationships

Web Content Accessibility Guidelines (WCAG) 2.1

W3C Recommendation 05 June 2018

This version:

<https://www.w3.org/TR/2018/REC-WCAG21-20180605/>

Latest published version:

<https://www.w3.org/TR/WCAG21/>

Latest editor's draft:

<https://w3c.github.io/wcag/21/guidelines/>

Implementation report:

<https://www.w3.org/WAI/WCAG21/implementation-report/>

Previous version:

<https://www.w3.org/TR/2018/PR-WCAG21-20180424/>

Previous Recommendation:

<https://www.w3.org/TR/2008/REC-WCAG20-20081211/>

Editors:

[Andrew Kirkpatrick](#) (Adobe)

[Joshue O Connor](#) (Invited Expert, InterAccess)

[Alastair Campbell](#) (Nomensa)

[Michael Cooper](#) (W3C)

WCAG 2.0 Editors (until December 2008):

Ben Caldwell (Trace R&D Center, University of Wisconsin-Madison)

Loretta Guarino Reid (Google, Inc.)

Gregg Vanderheiden (Trace R&D Center, University of Wisconsin-Madison)

Wendy Chisholm (W3C)

John Slatin (Accessibility Institute, University of Texas at Austin)

Jason White (University of Melbourne)

Please check the [errata](#) for any errors or issues reported since publication.

Simple, if not always easy:
“Provide captions for all prerecorded
media.”

[WCAG 2.1 guideline for captions](#)

Complex, strategic IA task:

“When the sequence in which content is presented affects its meaning, a correct reading sequence can be programmatically determined.”

[WCAG 2.1 guideline for meaningful sequence](#)

Adherence to standards is a poor predictor of usability.

Power - Guidelines are only half of the story: accessibility problems encountered by blind users on the web

Freire - Empirical results from an evaluation of the accessibility of websites by dyslexic users

**Automated tools can check against 30%
of standards.**

Pa11y

Frameworks help, they don't do it for you.

Ethan Marcotte - Accessibility is not a feature


Include people with access needs in your research, but also use what we know.

[The Value of Involving People with Disabilities in User Research](#)

[Running research sessions with people with disabilities](#)

[Tips For Conducting Usability Studies With Participants With Disabilities](#)

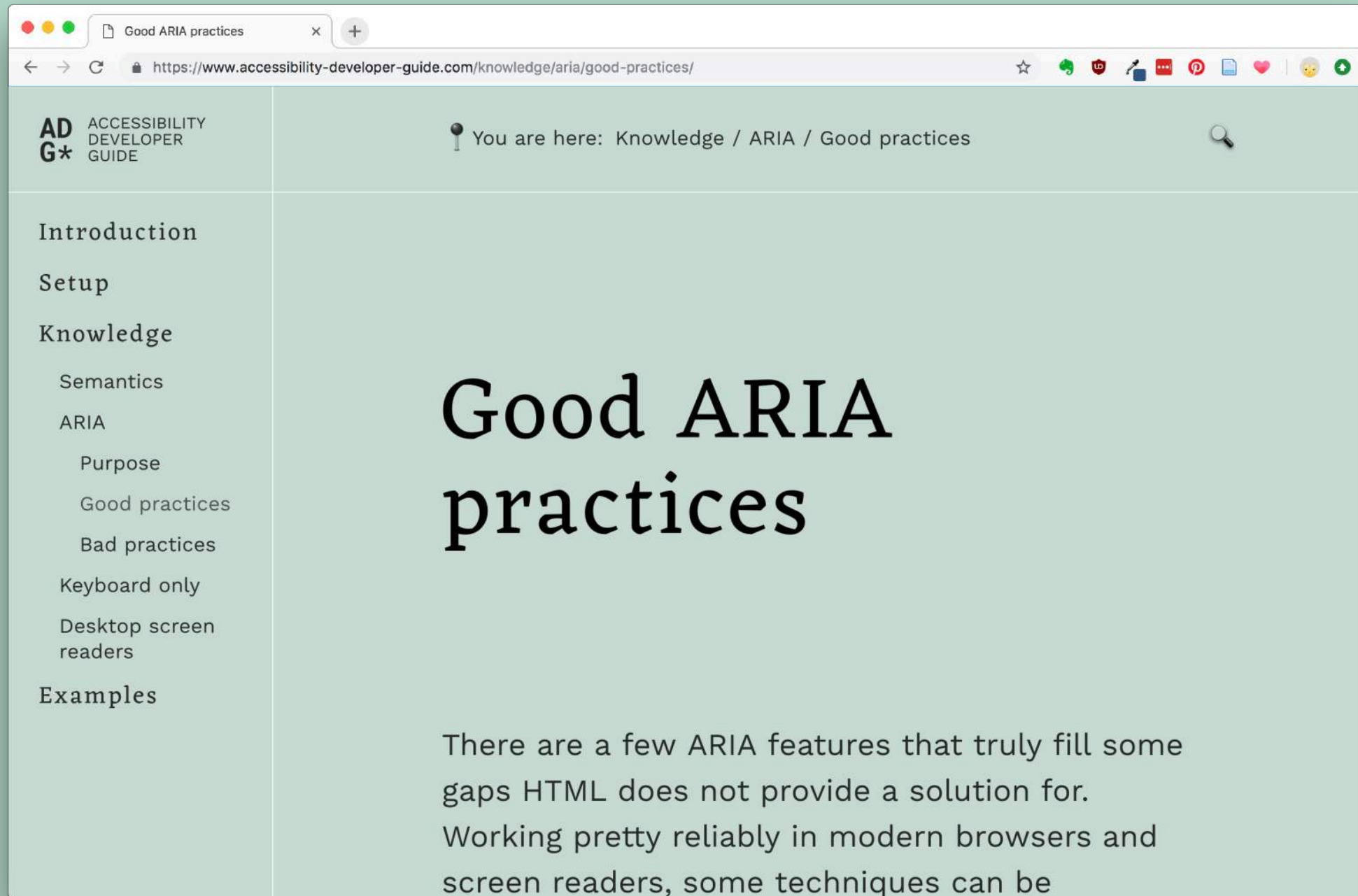
4 challenges to be inclusive in your IA:

The background of the slide is a light teal color with a repeating pattern of small, stylized pencil icons. The pencils are arranged in a grid-like fashion, with some pointing up and some pointing down, creating a subtle texture.

1 •

Do the training your developers do.

(If you don't have developers of your own, store-bought is fine:
[Udacity - Web Accessibility](#))



[Accessibility Developer Guide](https://www.accessibility-developer-guide.com/)

The background of the slide is a light teal color with a repeating pattern of stylized open book icons. Each icon is a simple line drawing of an open book, showing two pages and a central spine. The icons are arranged in a grid-like pattern, with some slightly offset from others, creating a subtle texture.

2. Read the guidelines.

[WCAG guidelines explained part 1](#)
[WCAG guidelines explained part 2](#)

**3. Find one thing to add to
your IA artifacts.**

The background of the slide is a light teal color with a repeating pattern of white speech bubble icons. Each speech bubble contains three horizontal lines, representing text.

4. Practice saying, “This is an accessibility issue.”

Accessible IA is good IA.

Red Route



Blue Route







**IA + Accessibility =
Better experiences for everyone**





@documentalope

<http://bit.ly/inclusivelA>

